

Bungle Bungle Scenic Flights



Mitchell Falls & Kimberley Coast Day Trips

Bungle Bungle Overnight Packages from Kununurra

View Lake Argyle, King George Falls, the Ord River and Cockburn Range



aviair

Book Online aviair.com.au
2022





Choose a Bungle Bungle tour that suits you

| Tour Code | Return Scenic Flight from Kununurra to the Bungle Bungle | Guided Walk to Cathedral Gorge & Bungle Bungle Domes | Guided Walk to Echidna Chasm | Overnight Stay at Bungle Bungle Savannah Lodge | Domes & Kungkalanayi Lookout Guided Walk | Bungle Bungle Helicopter Flight | Cruise | Available | Approx. Duration | Adult Price | Page |
|-------------|--|--|------------------------------|--|--|---------------------------------|---------------------------|--------------------|----------------------|-------------|------|
| C | ✓ | | | | | | | Year round | 2 hours | \$450 | 3 |
| CJ3 | ✓ | | | | | | Ord River Cruise | April to October | 2 hours + 6 hours | \$625 | 13 |
| CLAS | ✓ | | | | | | Lake Argyle Sunset Cruise | March to November | 2 hours + 5.75 hours | \$555 | 13 |
| E | ✓ | | | | | 30 minutes | | April to October | 4 hours | \$929 | 8 |
| B1 | ✓ | ✓ | | | | | | April to September | 8 hours | \$849 | 4 |
| B18 | ✓ | ✓ | | | | 18 minutes | | April to September | 8 hours | \$1,159 | 5 |
| B30 | ✓ | ✓ | | | | 30 minutes | | April to September | 8 hours | \$1,319 | 5 |
| G | ✓ | ✓ | ✓ | | | | | April to September | Full day | \$1,295 | 6 |
| G0 | ✓ | ✓ | ✓ | ✓ | | | | April to September | Full day / 1 night | \$1,645 | 7 |
| B5 | ✓ | | | | ✓ | | | April to September | 8 hours | \$849 | 9 |

Also view our value-packed Mitchell Falls Discoverer day trip (page 10) and Colours of the Cockburn Range scenic flight (page 12).
Senior & child rates available.

Why choose Aviair

- ✓ All planes are air-conditioned, with large windows and high wings for optimal viewing
- ✓ Courtesy transfers to and from our terminal within Kununurra
- ✓ Complimentary cold bottled water and chilled refresher towels
- ✓ Locally owned award-winning company with over 38 years experience
- ✓ Aviair is a CASA approved commercial airline operating to the highest flying and maintenance safety standards
- ✓ Personalised pilot commentary

aviair



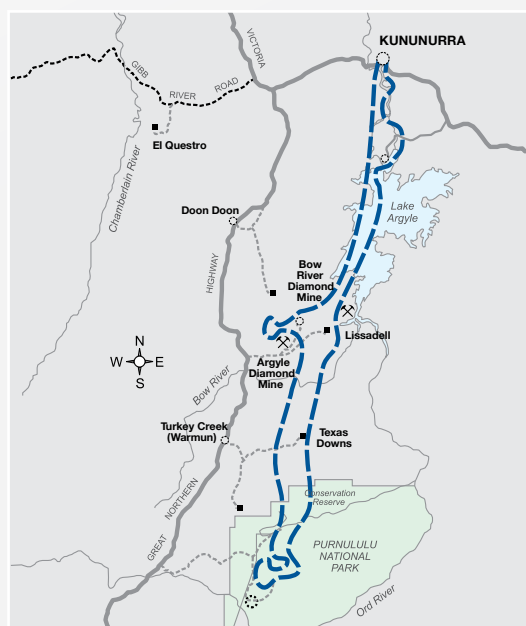
Bungle Bungle Adventurer

TOUR CODE C

The Bungle Bungle Range in the World Heritage listed Purnululu National Park is one of the most fascinating geological landscapes in Western Australia; from an aircraft it is an imposing sight.

Tour highlights

- ✓ Be enthralled at the full expanse of Lake Argyle, the Ord Top Dam Wall, Lake Kununurra and the Ord Irrigation Area.
- ✓ View the Carr Boyd and Osmand Ranges, the Ord River and Bow River.
- ✓ Experience spectacular aerial views of the Bungle Bungle Range in the World Heritage listed Purnululu National Park.
- ✓ Fly over the fascinating Argyle Diamond Mine where rare pink diamonds were once mined.



| | |
|------------------|--|
| AVAILABLE | All year round |
| DURATION | Approximately 2 hours |
| DEPARTURE | 6:00am, 9:00am and 2:30pm |
| COST | Adult \$450 Child \$430 Senior \$430 |
| BRING | Camera |

UPGRADE

Your Bungle Bungle Scenic Flight by adding on helicopter flights, overnight stays, guided walking tours or cruises.

See package breakdowns on the left hand page.





Bungle Bungle domes. Image: Tourism WA

Bungle Bungle Wanderer



TOUR CODE B1

Experience Purnululu by air and on the ground with a guided walk to truly appreciate the vast rugged beauty of the World Heritage listed national park.

Tour highlights

- ✓ Be enthralled by a one hour scenic flight from Kununurra, flying in air-conditioned comfort in a high-wing plane.
- ✓ View the Ord Irrigation Area, the Ord Top Dam Wall, Lake Kununurra and the full expanse of Lake Argyle. View the Carr Boyd Ranges, Osmand Ranges, the Ord River and Bow River.
- ✓ Land in Purnululu National Park to meet your guide and drive to the Bungle Bungle Range where you will start a moderate rated 3km walk.
- ✓ Walk amongst the famous eroded towers and black and orange banded beehive structures on the Domes Walk.
- ✓ Your guide will take you into Cathedral Gorge, where the towering cliffs open up to form a space with awe-inspiring natural acoustics. View the unique formations of Piccaninny Creek, which flows only in the monsoon waterfall season.
- ✓ Learn about the Kimberley climate, the six seasons and unique flora and fauna, all important characteristics to the traditional custodians of the land.
- ✓ Return on your scenic flight back to Kununurra, on the way viewing the Argyle Diamond Mine where rare pink diamonds were once mined.
- ✓ Tour includes morning tea, lunch and afternoon tea.

| | |
|------------------|---|
| AVAILABLE | 15th April to 15th September |
| DURATION | 8 hours |
| DEPARTURE | 9:00am (6:00am September) |
| RETURN | 5:00pm (2:00pm September) |
| COST | Adult \$849 Child \$720 Senior \$820 |
| BRING | Camera (must have lanyard or wrist strap for optional helicopter flight), day-pack (optional), sturdy walking/hiking shoes (no leather soles), hat, sunglasses, sunscreen, water bottle, light cotton clothing. A small cooler bag with your lunch is provided. |



Image: Tourism WA

UPGRADE YOUR EXPERIENCE WITH THESE ADD-ONS



ADD ON:

+ 18 Minute Bungle Bungle Helicopter Flight  TOUR CODE B18

Depart Bellburn Airstrip for the southern tip of the Bungle Bungle Range where you will view Y Gorge before flying across the top of the massif to the mouth of spectacular Piccaninny Gorge. Soar over Piccaninny Creek to view Cathedral Gorge and the famous black and orange striped beehive shaped domes.

Bungle Bungle Wanderer + Helicopter Price

Adult \$1,159 | Child \$1,029 | Senior \$1,135

ADD ON:

+ 30 Minute Bungle Bungle Helicopter Flight  TOUR CODE B30

The sandstone massif of the Bungle Bungle Range is almost 50 times the area of Uluru – there are more stunning features and spectacular landforms to see in this half hour scenic flight than you would imagine possible. View the hidden red rock gorges of the north-west tip, Piccaninny Gorge from end to end and the unique beehive formations that have contributed to the listing of Purnululu National Park as one of Australia's World Heritage areas.

Bungle Bungle Wanderer + Helicopter Price

Adult \$1,319 | Child \$1,189 | Senior \$1,295



Bungle Bungle Wanderer + Echidna Chasm

TOUR CODE G

Scenic flight to the Bungle Bungle Range before landing to spend the whole day in Purnululu exploring Cathedral Gorge, the Domes and Echidna Chasm on a guided walking tour.

Tour highlights

- ✓ Commence your day tour with a one hour scenic flight from Kununurra in an air-conditioned, high wing plane. Fly over the Ord Irrigation Area, Lake Kununurra, the Ord Top Dam Wall and the full expanse of Lake Argyle. View the Carr Boyd Ranges, Osmand Ranges, the Ord River and Bow River.
- ✓ Once you land in Purnululu National Park, follow a similar itinerary to the Bungle Bungle Wanderer (B1), see tour description on page 4. Then continue on to the northern gorges of Purnululu which are quite different to Cathedral Gorge and the Domes in the south.
- ✓ A 65 minute drive takes you along the Western Wall of the Bungle Bungle Range. A rocky path leads your walk into Echidna Chasm, which narrows until it is just two shoulders' width apart. Gazing skywards to the bright blue sky, the orange towering walls look as if they are lit from within. Livistona palm trees cling to the vertical sides.
- ✓ **A good level of mobility is required** for this 1.5 hour moderate walk as it includes walking over rocks, walking around boulders and climbing small ladders with handrails.
- ✓ Return on a scenic flight to Kununurra flying over the Argyle Diamond Mine where rare pink diamonds were once mined.
- ✓ Morning tea, lunch and afternoon tea included.

AVAILABLE 15th April to 15th September

DURATION Full day

DEPARTURE 6:00am

RETURN 5:00pm

COST Adult \$1,295 | Child \$1,095 | Senior \$1,255

BRING Camera, day-pack (optional), sturdy walking/hiking shoes (no leather soles), hat, sunglasses, sunscreen, water bottle, light cotton clothing. A small cooler bag with your lunch is provided.

MUST DO ★



ADD ON:

✚ Overnight Stay at Bungle Bungle Savannah Lodge

TOUR CODE GO

Spend a night in the heart of Purnululu National Park

Dinner, bed and breakfast package in private ensuite cabins. Equipped with a licensed bar, outdoor fire, the only swimming pool in the national park and restaurant which provides indoor/outdoor dining, serving chef-prepared meals using fresh local ingredients infused with native herbs and spices.

Bungle Bungle Wanderer + Echidna Chasm + Overnight Stay Price

Adult \$1,645* | Child \$1,350* | Senior \$1,605* | + Accommodation Single Supplement \$165

*Twin Share.



Bungle Bungle Adventurer + Helicopter Flight

TOUR CODE E

This award-winning air tour from Kununurra to Purnululu National Park is an exhilarating adventure taking in the Kimberley's best icons by plane and helicopter.

Tour highlights

- ✓ The scenic plane flight gives panoramic scenic views of the vast landscape and the helicopter flight gets you closer to the hidden secrets of the Bungle Bungle with great photo opportunities.
- ✓ Depart Kununurra by plane to take you over Lake Kununurra, the Diversion Dam and Ord River Irrigation Area, the huge expanse of Lake Argyle, the Ord Top Dam and Carr Boyd Ranges. Fly over Lissadell and Texas Downs stations before entering the World Heritage listed Purnululu National Park, landing in the Bungle Bungle Range.
- ✓ Transfer to your helicopter for an exhilarating 30 minute flight. Discover the sandstone massif of the Bungle Bungle Range which is almost 50 times the area of Uluru!
- ✓ The helicopter flight includes the hidden red rock gorges of the northwest tip, Piccaninny Gorge from end to end and the unique beehive formations that have contributed to the listing of the Bungle Bungle Range as Australia's newest World Heritage area.
- ✓ Re-board your plane for the return trip over the Osmand Range, with an orbit over the impressive Argyle Diamond Mine.

| | |
|-----------|--|
| AVAILABLE | April to early October – on demand |
| DURATION | 2 hour scenic flight plus 30 minute helicopter |
| DEPARTURE | 9:00am |
| RETURN | Approx. 1:00pm |
| COST | Adult \$929 Child \$909 Senior \$909 |
| BRING | Camera (must have lanyard or wrist strap), light jacket. |



Image: Tourism WA



Taste of the Bungle Bungle

TOUR CODE B5

A short guided walk through the iconic Bungle Bungle domes, a good option for those unable to walk longer distances.

Tour highlights

- ✓ Depart Kununurra on a scenic flight to the World Heritage listed Purnululu National Park. Soar over the full expanse of Lake Argyle, the Ord Top Dam Wall, Lake Kununurra, and the Ord Irrigation Area and be enthralled by the magic of the East Kimberley landscape.
- ✓ As you track closer to Purnululu National Park, witness spectacular aerial views of the Bungle Bungle Range, with plenty of great photo opportunities.
- ✓ Once landed in Purnululu National Park, join a leisurely 1km guided walk through the eye-catching black and orange banded domes.
- ✓ Enjoy a leisurely lunch and refreshing beverage looking out at the beehive domes.
- ✓ Be spoiled for views at the Kungkalanayi Lookout that give you stunning panoramic views of the region including the western escarpment of the Bungle Bungle Range.
- ✓ Stop by the Purnululu Visitor Centre for the chance to purchase a memento of your exciting adventure.



| | |
|------------------|--|
| AVAILABLE | April to September |
| DURATION | Full-day tour 9:00am to approx. 5:00pm |
| DEPARTURE | 9:00am (6:00am in September) |
| COST | Adult \$849 Child \$720 Senior \$820 |
| BRING | Enclosed shoes must be worn (no heels or leather soles). Camera, hat, water bottle and sunglasses. |

aviair



Mitchell Falls Discoverer

TOUR CODE H

This full-day trip by plane covers an area the size of central Europe. Majestic waterfalls, cattle stations, wilderness reserves and incredible coastal views will keep you enthralled all day.

This value-packed tour includes a scenic plane flight, thrilling helicopter flights, an optional guided hike and meals.

Tour highlights

- ✓ Fly by plane over the Ord River Irrigation Area, Carlton Hill Station, Wyndham and the Cambridge Gulf viewing beautiful patterned mud flats and the mouth of the King and Ord Rivers.
- ✓ Marvel at the Kimberley coastline including the Berkeley River, King George Falls and Kalumburu.
- ✓ Land at the remote Mitchell Plateau airstrip to transfer to a HeliSpirit helicopter and fly to the start of the walk to the falls.
- ✓ Fit and experienced hikers can enjoy a guided 4.5km walk to the top of the Mitchell Falls, discovering ancient rock art and waterholes along the way.
- ✓ Those wishing to spend more time at the top of the Falls can choose to take a short helicopter transfer instead of hiking at no extra cost.
- ✓ Return to the airstrip by helicopter, taking off from the falls and flying over them for great photo opportunities.
- ✓ Return to Kununurra flying over El Questro, Home Valley Station and the Cockburn Range as the afternoon glow lights up the landscape.

| | |
|-----------|--|
| AVAILABLE | May to August, on demand |
| DURATION | Full Day Tour 6:00am to 3:00pm |
| COST | \$1,685 per person (includes \$40 Wunambal Gaambera fee) Tour includes morning tea, lunch and a beer or wine to enjoy before your flight home |
| BRING | Camera, day pack, swimwear, towel, water bottle, sturdy walking/hiking shoes, light cotton clothing, hat, sunscreen, jacket for cool mornings/helicopter flights |

MODERATE TO DIFFICULT HIKE

The 4.5km hike requires a high level of mobility as there are numerous slippery creek crossings and rocks to clamber over.

HELICOPTER OR HIKE

You have the option of helicopter flight or hike to the top of the falls.

.....
Please note this hike is a difficult and uneven track with river crossings, which can be slippery.
.....

The Mitchell Falls is in a very remote area and if you are at all unsure of your ability to do the hike please choose the helicopter transfer instead. You will need to choose hike or helicopter at time of booking.



Swim at the top of the falls



Hike



Fly over King George Falls



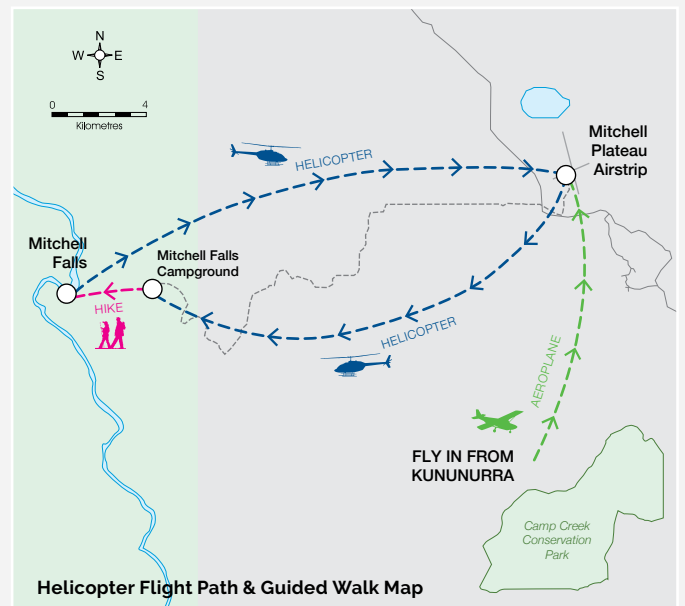
Discover ancient Rock Art



Patterns in the King River mud flats



Plane Flight Path



Helicopter Flight Path & Guided Walk Map



Cockburn Range

Colours of the Cockburn Range

TOUR CODE M

This incredible scenic flight takes you west of Kununurra to the Cockburn Range and mesmerizing Wyndham mud flats.

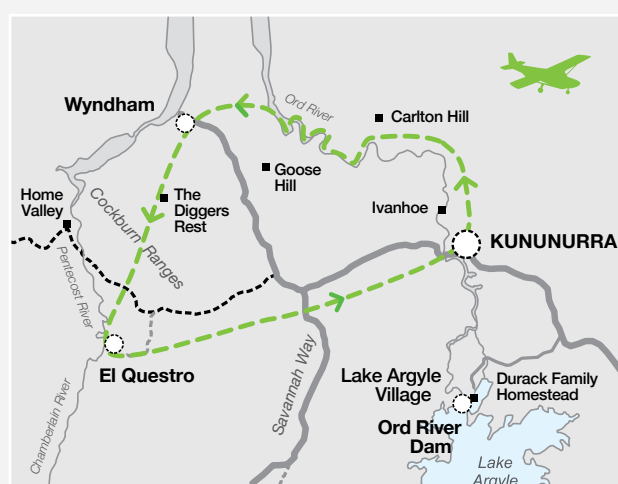
Tour highlights

- ✓ Board your aircraft to experience the magic of the Kimberley landscape glow in the afternoon sun.
- ✓ The flight out of Kununurra takes in the picturesque farmlands and lower Ord Irrigation Scheme. Your pilot will descend to follow the Lower Ord River to hopefully spot some crocs!
- ✓ Track towards Wyndham where river systems create meandering patterns through the mudflats, before diverting to the sheer cliffs of the glowing Cockburn Range as the afternoon sun washes over the landscape.
- ✓ Fly over El Questro Wilderness Park, viewing the luxury Homestead perched on the Chamberlain River, before heading east along the magnificent Cockburn Range.



Patterns in the King River Mud Flats

| | |
|-----------|------------------------|
| AVAILABLE | May to September daily |
| DURATION | 1 hour 15 minutes |
| DEPARTS | Kununurra |
| TIME | 3:30 pm |
| COST | \$320 per person |
| BRING | Camera |



FLIGHT/CRUISE COMBOS

ADD A LAKE OR RIVER CRUISE ON TO YOUR BUNGLER BUNGLER ADVENTURER SCENIC FLIGHT (PAGE 3) AND SAVE UP TO \$25 – You can split the flight and cruise over two days



Triple J Ord River Day Tour

TOUR CODE CJ3

The day begins with complimentary pick up from your Kununurra accommodation, before travelling by coach through Durack country to Lake Argyle (70km). Stop for a short break at the historic Durack Homestead Museum. This museum was constructed as a replica of the original family homestead and uses the original homestead stone. Re-board the coach for a short drive to Lake Argyle Resort before viewing the vastness of Lake Argyle from a scenic look-out. The coach crosses the Ord Top Dam wall, which provides views of the Ord Hydro-Power Station, before boarding the Triple J Tours boat for a scenic 55km cruise back to Kununurra. Marvel at the spectacular scenery, wildlife, flora and fauna found along the way, including the elusive freshwater crocodile! Enjoy afternoon tea at a riverside camp before heading back to Kununurra. Take in a colourful East Kimberley sunset before docking at the marina and re-boarding the coach for drop off to your accommodation.

Available April to October
Duration 2 hour flight + 6 hour cruise (J3 incl. 1 hour coach transfer)
Departure Flight: 6:00am, 9:00am or 2:30pm (Apr-Sept) 6:00am (Oct)

Cruise Pick-up approx 11:30am, returns approx. 5:30pm
Price Adult \$625 | Child \$580 | Senior \$610
Bring Cruise: Camera, hat, sunglasses, sunscreen, water bottle and light jacket



Lake Argyle Cruises Sunset Tour

TOUR CODE CLAS

Experience a coach tour from Kununurra to Lake Argyle and a majestic sunset whilst cruising on Lake Argyle. Swim in the fresh water and enjoy informative commentary about the flora and fauna and the history & expanse of the lake. Enjoy a complimentary drink and light snacks as you watch the sun setting behind the Carr Boyd Range often reflecting magnificent colours on the water.

Available March to November (Durack Homestead closed October to April)
Duration 2 hour flight + approx. 6 hour cruise (including 1 hour coach transfer each way)
Departure Flight: 6:00am, 9:00am or 2:30pm (April-Sept) 6:00am (Oct-Nov)
Cruise: Pick-up times may vary, please confirm when booking
Price: Adult \$555 | Child \$510 | Senior \$545
Bring: Camera, hat, sunscreen, sunglasses, water bottle, swimmers, towel and light jacket

Bungle Bungle Savannah Lodge

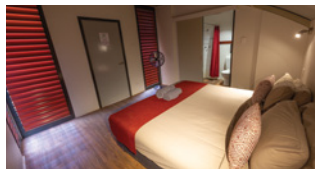
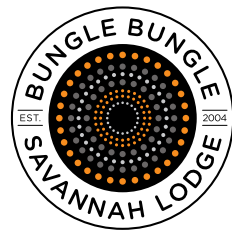
Spend a night under the starry skies in the World Heritage listed Purnululu National Park.

After a day exploring the Bungle Bungle Range, enjoy a swim in the only pool located in the national park and indulge in chef-prepared meals using fresh local ingredients infused with native herbs & spices.

Share stories of your days' adventures while relaxing by the open outdoor fire, with drinks available at the Bungles Bar.

Dinner, bed and breakfast packages and guided walking tours available.

bunglebunglesavannahlodge.com.au



Bungle Bungle Guided Tours

Bungle Bungle Guided Tours offer a unique experience, providing guided walking tours through Purnululu National Park.

One of only 16 UNESCO Natural World Heritage sites in Australia, Purnululu National Park covers almost 240,000 hectares of remote wilderness and includes the Bungle Bungle Range, a spectacular landscape of sculptured rocks and sandstone towers. Your guide will take you back to a time where the Aboriginal people lived here for some 40,000 years. Learn about bush-tucker, Aboriginal customs and the many reasons why Purnululu is World Heritage listed. Immerse yourself in the spirit of this ancient place.

bunglebungleguidedtours.com.au

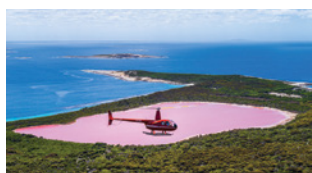


HeliSpirit

HeliSpirit are the pioneers of scenic flights in the Kimberley. Offering thrilling helicopter adventures from spectacular locations in the Kimberley, Pilbara, Esperance and Northern Territory regions. Products range from scenic flights to heli-hikes, heli-picnics, heli-pub tours, waterfall adventures and high-end Luxury Helicopter Safaris.

HeliSpirit tours depart from Kununurra, Purnululu National Park, Bungle Bungle Caravan Park, Warmun, Lake Argyle, El Questro, Mitchell Falls, Katherine, Esperance and Karratha.

helistpirit.com.au



AVIAIR TERMS AND CONDITIONS

Cancellation Policy

Day Scenic Flights/Tours:

Within 24 hours or less of departure: NON-REFUNDABLE.
24 hours to 7 days prior to departure: 20% administration fee will be charged per booking.

Overnight Tour Packages:

Within 7 days or less of departure: NON-REFUNDABLE.
8 days to 14 days prior to departure: 50% of booking will be retained. 15 days to 30 days prior to departure: 20% of booking will be retained. A medical certificate may be requested if cancellation is on the grounds of illness.

Validity of Rates

Prices displayed are valid to 31 March 2023 unless stated otherwise.

Flight Times and Tour Duration

All times are estimates.

COVID-19 Policy

Our standard cancellation policy remains in place, however, if guests are unable to travel, due to Government border closures or travel restrictions, restricting the client from

entering the Kimberley, at the time of travel, we will offer to amend the travel dates, with payments held in credit or cancel without fee.

Customer Weight

Customer and approximate baggage weights must be provided to us at time of booking. All customers and baggage will be weighed prior to departure for safety and operations reasons. We reserve the right to deny carriage to customers who provide weight information that is inaccurate by more than 15% in which case any fare paid will be forfeited.

Maximum Weight Seat Limits

R44 Helicopter: 136kg.

Disabled Passengers

We welcome customers with impaired mobility. We must be advised a minimum of 48 hours prior to scheduled time of departure with the level of assistance required. For health and safety reasons, we are not permitted to lift a passenger into or out of the aircraft.

Minimum/Maximum Numbers

A minimum of two passengers or the equivalent cost

is required to confirm a tour booking, unless the tour is already confirmed to run. Please call our reservations team to check availability for one passenger. All overnight package rates are Twin Share, Single Supplement prices are available.

Child Age/Infant Policy

Infants are classified 0-2 years and may travel free of charge, on their parent's lap. Please note that only one infant may travel per aircraft. An adult must accompany children classified as 3-12 years of age inclusive, on the flight.

Helicopter Flight – Cameras

Cameras and phones must have lanyards/wrist straps. iPads and Tablets are not permitted on board helicopters.

Passengers must be at the aircraft departure point 30 minutes prior to scheduled departure time.

Complimentary pick up from Kununurra accommodation 45 minutes prior to departure.

All care is taken but no liability is accepted for damage to personal items.

For full terms and conditions please contact Aviair or visit our website.

2022



About the Company

Locally Owned and Managed

by Michael & Kate McConachy

As we celebrate our 38th year of operation, we offer even more reasons to choose Aviair for your Kimberley scenic air tour.

Nothing is more important to us than the safety of our passengers, crew and those who assist us in delivering an award-winning product.

Aviair is a CASA approved commercial airline operating to the highest flying and maintenance safety standards — rest assured you are in safe hands.

With significant bases in Kununurra, Broome and Karratha, we have invested heavily in our fleet to ensure it is the youngest and best presented fleet of aircraft operated in Australia's north-west.

All of our aeroplanes are air-conditioned, with large windows and high wings for ultimate scenic views.

Our skilled pilots provide an informative commentary as you fly over some of the most beautiful scenery in the world. Aviair aeroplanes all have a centre aisle for easy access and greater headroom and legroom than other scenic flight planes in the Kimberley. Our aim is that you leave us with memories of a scenic experience of a lifetime.

As well as operating scenic air tours that have earned us multiple tourism awards, we have a significant charter flight business sector with corporate and private clients throughout Australia's north-west. In addition, we operate a regional airline, servicing major centres and remote towns of the Kimberley and Pilbara regions. Our aircraft maintenance support team is based here in Kununurra.

Our Scenic Fleet | Cessna Grand Caravan and GA8 Airvan

Why choose Aviair

- ✓ Air-conditioned planes
- ✓ Courtesy transfers to and from our terminal within Kununurra
- ✓ Complimentary cold bottled water and chilled refresher towels
- ✓ Locally owned award-winning company
- ✓ Over 38 years experience
- ✓ Aviair is a CASA approved commercial airline operating to the highest flying and maintenance safety standards
- ✓ Personalised pilot commentary



Did you know?

Our cool refresher towels are made from 100% cotton and scented with locally grown Ord Valley Sandalwood

Icon legend



Air-conditioned Aircraft



Helicopter



Boat Cruise



4WD



Tour Bus



Walking



"What an experience!!"

Definitely an experience of a lifetime. Stunning scenery throughout the flight over the Bungle Bungle and Lake Argyle. The Aviair staff made us feel very welcome on arrival. Our pilot Harrison got everyone chatting, gave great commentary and made for a very comfortable flight. Highly recommend to take this tour if you ever get the chance.



BOOKINGS 1800 095 500

Book online at aviair.com.au

E: bookings@aviair.com.au

Lot 319 Laine Jones Drive, Kununurra Airport Western Australia 6743
PO Box 612, Kununurra Western Australia 6743

Follow us @aviairwa

aviair